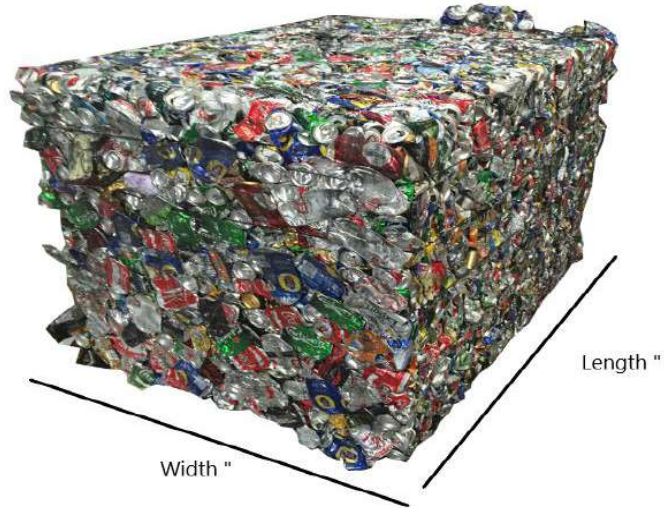


Horizontal Baler

Length (in inches) + Width (in Inches) x2 +12" = Total Inches



Phone: 765-364-0113

Email: sales@midwestbaleties.com

Verticle Baler

Height (in inches) + Width (in inches) x2 +12" = Total Inches



Associated Length

<u>Total Inches</u>	<u>Length</u>
97-108	10'
109-120	11'
121-132	12'
133-140	13'
141-152	14'
153-164	15'
165-176	16'
177-188	17'
189-200	18'
201-212	19'
213-224	20'
225-236	21'
237-248	22'

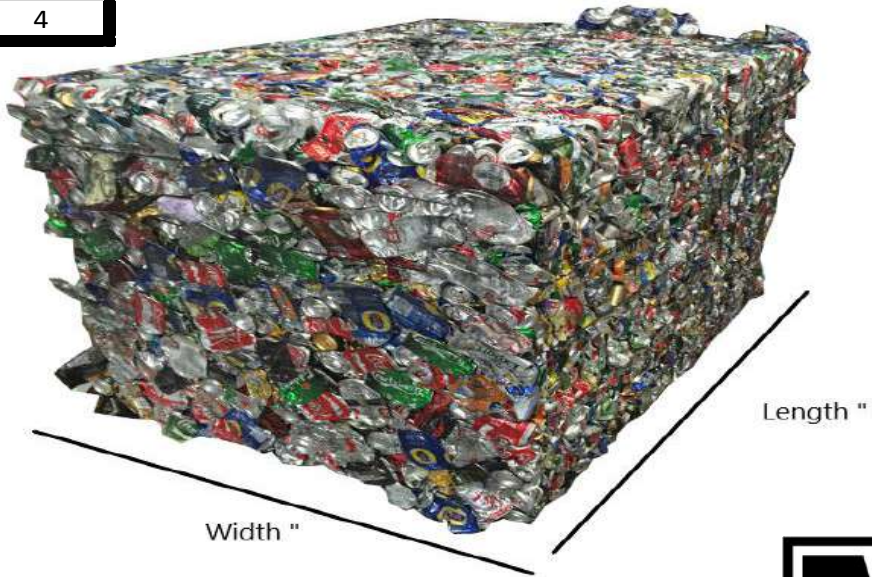
Associated Gauge (Bale Tie and Auto Tie)

<u>Break Load</u>			<u>Total Bale Weight</u>			
<u>Gauge</u>	<u>Finish</u>	<u>Break Load/Tie</u>	<u>3 Tie System</u>	<u>4 Tie System</u>	<u>5 Tie Sytem</u>	<u>6 Tie system</u>
10ga.	Galv. or B/A	900-925 lbs.	2700-2775 lbs.	3600-3700 lbs.	4500-4625 lbs.	5400-5550 lbs.
11ga.	Galv. or B/A	725-750 lbs.	2175-2250 lbs.	2900-3000 lbs.	3625-3750 lbs.	4350-4500 lbs.
12ga.	Galv. or B/A	550-575 lbs.	1650-1725 lbs.	2200-2300 lbs.	2750-2300 lbs.	3300-3450 lbs.
13ga.	Galv. or B/A	425-450 lbs.	1275-1350 lbs.	1700-1800 lbs.	2125-2250 lbs.	2550-2700 lbs.
14ga.	Galv. or B/A	325-350 lbs.	975-1050 lbs.	1300-1400 lbs.	1625-1750 lbs.	1950-2100 lbs.

**These are general sizing specifications, please contact us with any nonstandard applications

Bale 1	
Length:	72"
Width:	42"
Total Lbs.:	2275 Lbs.
Wires/Bale :	4

Example 1



Bale 2	
Width:	54"
Height:	32"
Total Lbs.:	2200 Lbs.
Wires/Bale:	5

Example 2



Phone: 765-364-0113

Email: sales@midwestbaleties.com

Length + Width =	114"
	x2
	228"
	add 12"
Total Inches =	240"

240" = 22' Bale Tie

Total Weight =	2275 lbs.
Wires per Bale =	4

2275 lbs. @ 4 ties = 12ga.

Height + Width =	86"
	x2
	172"
	add 12"
Total Inches =	184"

184" = 17' Bale Tie

Total Weight =	2200 lbs.
Wires per Bale =	5

2200 lbs. @ 5 ties = 13ga.

**These are general sizing specifications, please contact us with any nonstandard applications